



SCA Group Newsletter

September 2014

IN THIS ISSUE

Welcome Back

Following on from the success of our inaugural SCA Group Newsletter, we are proud to release our second installment, and we hope that you find the contents both interesting and informative.

The Newsletter gives us an ideal platform to showcase our abilities, our dedication to providing the best possible service, and to perhaps introduce you to areas of our capabilities that you previously were unaware of.

In this issue, you can find an overview of our Health and Safety activities which are paramount in our industry, and the associated accreditations we have secured as testament to our attitude and procedures.

SCA continues to produce safety statistics below the National Averages, and sets internal targets to manage and monitor all

activities with the ultimate goal being further improvement and above all, protection of the employee in potentially hazardous environments.

We have also taken the opportunity in this issue to showcase our Rope Access and Industrial Coating abilities, with an overview of some completed projects, and an insight in to our overall service provisions.

SCA have become accustomed to accessing and painting an array of different structures, buildings and assets in typically hard to reach areas, and we have included a couple of case studies here to demonstrate this. We have developed solutions for on and offshore activities, high level access requirements and many more, so if this newsletter does not satisfy your interest, make sure you visit our website as well.

We are hugely grateful to you for taking the time to view our Newsletter and we hope that you will continue to monitor our progress in the future, but in the meantime, please visit our website, and feel free to contact us to discuss any requirements or questions that you might have that we can help you with.



Exeter Central Railway Station

SCA Industrial Coatings have been employed at Exeter Station for maintenance works. Read on for more ...



Marine Scaffolding Services

The SCA Group remains active in the UK Shipyards across the country. Find out more inside



Health & Safety is No Accident

The SCA Group are a Multi-Discipline contractor, servicing various markets in Facilities Management, Marine and Commercial Contract Scaffolding, Rope Access, Industrial Painting and Specialist Containment.

All of SCA's operatives are qualified to the highest possible standard, in all of our trades meaning we are PTS qualified to work track-side on the Rail network, or IRATA trained to complete Rope Access contracts safely, and in line with industry guidelines.

The SCA Group hold various memberships, accreditations and qualifications. All of these certificates ensure that when employing the services of SCA, we operate to the highest industry standards, with health and safety always at the forefront of our operations.

SCA are full members of the NASC (National Access and Scaffolding Confederation), which is the National Trade Body for all access and scaffolding in the UK. There has been a conscious shift towards 'NASC Only' contractors of late, and SCA positively embrace all that the NASC stands for and regulates.

Through robust policies and procedures and a management team dedicated to the continual strive for health and safety excellence, SCA has secured full Link Up Registration to allow us to operate on the UK Rail Infrastructure. The certification is awarded after annual audit meaning our commitment to the accreditation is unwavered.

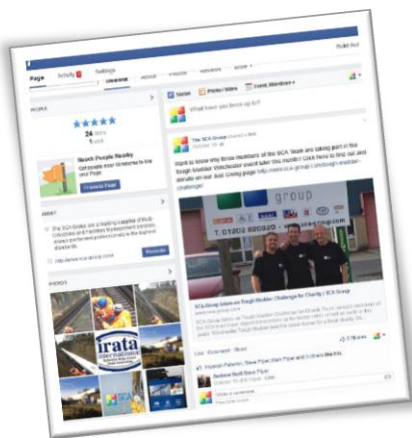
The SCA Group are also full members of IRATA (Industrial Rope Access Trade Association) - the governing body for the World's Rope Access community. Our Rope Access teams work to strict IRATA guidelines and as such employ the appropriately qualified technicians and supervisors.

For more information on all of our Accreditations and Memberships, visit www.sca-group.com/accreditations



CONTACT US

SCA Group Limited
 7 Crane Way, Woolsbridge Ind. Pk
 Three Legged Cross, Wimborne
 Dorset, BH21 6FA
 T: 01202 820820
 F: 01202 820950
 E: sales@sca-group.com
 W: www.sca-group.com



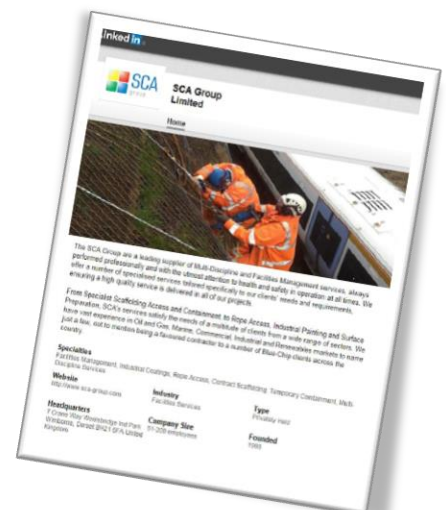
SCA in the 'Social' Media

At the SCA Group, we take untold pride in our drive to stay 'ahead of the game', and our appreciation of the impact of social media is apparent in what we do, echoed even in this Newsletter itself.

Our Mobile Application was a first for a scaffolding company in the UK and continues to hold updated content keeping SCA's followers up to date with all of the latest news and projects.

We can also be found on Facebook, Linked In, and Twitter and we are huge advocates of the ability of these platforms to spread the word and inform as many people as we can of our abilities, not to mention keeping up to date with the latest trends ourselves.

Why not follow us now using the links on our website homepage www.sca-group.com



NEWS STORIES



SCA's Tailor-Made Cantilevered Access Platform in Action

SCA have created an innovative approach to changing light fittings in Cruise Ship Atrium chambers to prevent the need for cumbersome access equipment and unnecessary disruption.



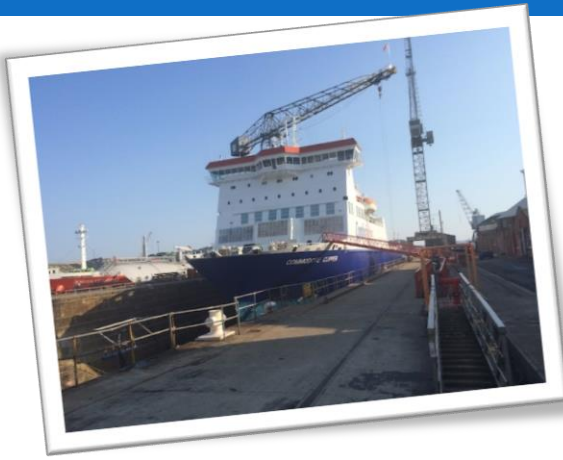
Contract Scaffolding Solutions

SCA provide innovative, technical solutions to the most complex access requirements in a variety of surroundings



Charity Tough Mudder Challenge

Three of SCA's 'finest athletes' are taking on the world-renowned Tough Mudder, 12 mile obstacle course in October to raise money for the Queen Alexandra Hospital in Portsmouth. See the full story on our website and maybe even make a donation. The easiest way is to text TFBj79 to 70070 and then the amount you wish to give. Wish them luck – they are going to need it!



SCA's Marine Scaffolding team operate on a wide variety of vessels across the country for a fantastic array of clients. Contact us if we can assist you!



Latest SCA Group News Updates

SCA continue to be involved in a wide range of projects which offer a source of specific interest or indeed a huge challenge at the time.

It is the challenge of these testing environments which we thrive upon, and continue to improve against, and what better way to share these achievements than by way of this Newsletter.

Over the next few pages, we are delighted to present an overview of some of our more 'eye-catching' projects for your information, and we hope you enjoy reading about them just half as much as we enjoyed overcoming and completing them!

For more information on these stories, other case studies, and galleries, please visit the SCA Group website:

www.sca-group.com

QEC Aircraft Carrier Construction

In recent months, SCA have been asked to assist the A&P Group in the construction of sections of the new Queen Elizabeth II Class Aircraft Carriers.

We were honoured to be part of such a ground-breaking project for the Royal Navy, and to continue our alliance with the A&P Group, and the completed units have now been shipped to Rosyth for final integration into the overall carrier build.

One of the blocks involved fabrication of 45 units in total using over 2500 tonnes of structural steel, assembled in four separate blocks, and posed multiple challenges in their construction.

Download SCA's Company Brochure Now

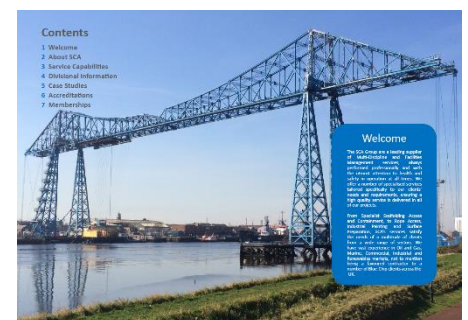
SCA is proud to announce that it's new Company Portfolio is available to download from our website.

In conjunction with our website and ground-breaking mobile App (still available with updated content in the App Store, Android Market and Windows Marketplace), the SCA Group's Brochure gives a fascinating insight in to the company, our service capabilities, some examples of our vast range of completed projects and much, much more.

Our brochure has everything you might want to know about the company, including our accreditations and memberships, and of course all contact details, so why not visit our website and download your copy today.

For a direct link to download our Brochure go to the following page on our website:

www.sca-group.com/about-us/downloads



CASE STUDY



Exeter Central Railway Station has received a makeover recently with SCA's Industrial Coatings Division providing the Painting expertise to finish the job.



Exeter Railway Station

SCA Industrial Coatings

The contract to complete the refurbishment of the steelwork and timber elements of Exeter Station required preparation and repainting to the underside canopies, internal & external canopy fascias and columns to multiple platforms. All of the work needed to be carried out to strict coating system specifications for paint and surface preparation, as stipulated by Network Rail.

All coats of specified paint were applied to the riveted steel panels under controlled atmospheric conditions to ensure the covering was applied in line with the manufacturer's guidelines, and to the satisfaction of the main contractor, and Network Rail legislation.

To allow the coating to be successfully applied,

the steelwork was mechanically prepared to achieve a standard of cleanliness in conjunction with ISO requirements. This involved full removal of the loose, flaky existing coat to a firm sound edge, and a thorough clean and degrease, as well as eradication of all contaminants.

To complete the maintenance work, SCA were also prepared and lined the valley gutters using a specialist paint approved by Network Rail. The work involved cleaning out the gutters, carrying out hand preparation and abrading followed by the application of a high build coating finish. To access the platform roof, a combination of mobile towers, valley walkers and a specially designed system of roof walk boards were used, ensuring the station looked as good as new on completion.

Shepherd's Crane Project

SCA Rope Access Division

The SCA Group's Rope Access team has once again received recognition for their capabilities and professionalism by securing another large, specialised painting contract in the North East of England. Our technicians are currently preparing and re-coating large areas of this magnificent structure as the Walker Crane undergoes a large scale maintenance and servicing process.

The Crane, owned by Shepherd Offshore, is the largest in the country measuring 200ft tall, and has been servicing the North East since the 1930's. This latest refurbishment

project will not only maintain the crane, but additional works have increased the carrying capacity attracting new business to the marine cargo handling facilities at the Technology Park, and also make sure that the area plays an even bigger part in the region's rapidly expanding oil and gas sector.

SCA's role in the overall maintenance package involves providing technicians, supervision and specialist safety staging to carry out patchwork repairs to multiple areas of the crane jib. The repairs require removal of the existing paintwork to return the steel structure back to its barest form, and then re-applying specialist coatings to restore the framework to its finished form.

SCA have provided the qualified personnel to carry out these works accessing the structure using Rope Access, in conjunction with the ongoing functioning of the crane, ensuring the minimum amount of disruption on site throughout.



FOR MORE INFORMATION

For more information about our Rope Access division contact Scott Barton on 01202 820820 or by email:

CONTACT
scott@sca-group.com



What else have we been up to?

Since our last Newsletter, a great deal has happened. Without focusing on the negatives (and in no particular order of importance), Europe successfully retained the Ryder Cup, Scotland voted 'No' to devolution, Germany won the World Cup, and Helen Wood won Big Brother.

More importantly, however, SCA has continued to display fortitude and excellence in all completed contracts, no matter how complex.

A brief synopsis of some of our work carried out by our various divisions can be found below, or for more in-depth discussion, please visit our website.

➤ Marine Repairs

SCA has recently been making a name for itself providing specialist technicians and methods of completing repair work on vessels in motion, in particular Cruise Liners.

Rope Access operatives and highly skilled scaffold engineers have been deployed to travel with a number of vessels and carry out repairs and maintenance whilst the ship remains in motion, and without providing any detriment in such a delicate environment.

SCA's careful planning and management meant that these projects were completed successfully, in potentially difficult circumstances, to the great satisfaction of the client who commented that 'SCA had done a fantastic job in tackling the issues they faced, and minimising impact on passenger experience'.

➤ Shipyards

SCA has remained exceptionally busy in all shipyard locations in recent months, none more so than in Portsmouth Naval Base, where we continue to work in support of BAE Systems maintaining the Royal Navy Fleet of vessels housed there.

Global events have contrived to increase workload of late and SCA have been commended for their diligence and professionalism in keeping refits on time whilst handling all manner of emergency works simultaneously.

BAE staff have commented that SCA have displayed 'a strong performance' and 'remained dogged in their determination to

succeed and have committed resource on every opportunity to de-conflict potential negative impact on other key work streams'.

➤ Industrial Coatings

Our Industrial Coatings Division has recently been involved in a maintenance project at Exeter Central Railway Station to refurbish the existing timber and steelworks.

Specialist techniques were used to strip the materials of the current coating which had been worn away over time, and re-apply a fresh paint surface under strict atmospheric conditions, and to guidelines stipulated by Network Rail.

➤ Contract Scaffolding

Our Commercial Scaffold Division continues to embrace projects and challenges in a variety of circumstances and environments, but with a constant attitude to health, safety, quality and cost efficiency.

Projects continue in the fields of Nuclear, Industrial, Residential and Commercial for a multitude of clients working in tanks, silos, schools and building sites alike.

➤ Rope Access Asset Protection

SCA's versatile Rope Access operatives can now be found working on the Shepherd's Crane in Newcastle-Upon-Tyne, having successfully completed the project to repair the Tees Transporter Bridge as reported last month.

Our technicians are completing patch work repairs to the vast structure to restore the paint surface of the crane to previous glories, all the while, allowing the crane to remain fully functional as required.

SCA retains its pro-active and resourceful outlook towards all of our current and future projects, and applies equal measures of aptitude and efficiency to all types of project. If you are interested in any of the provisions we can offer, please contact us:

T: 01202 820820

E: sales@sca-group.com

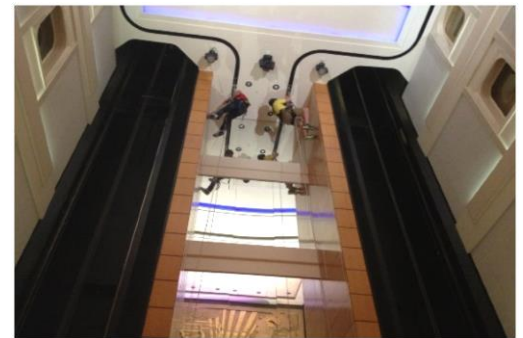
W: www.sca-group.com

SCA GROUP ACTIVITIES



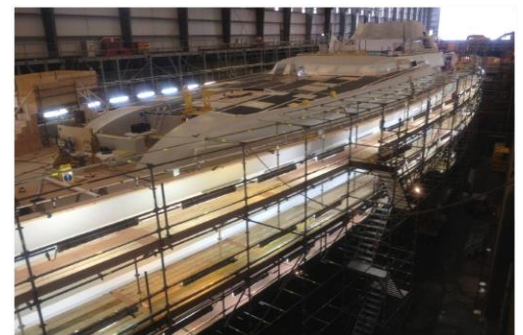
Marine Scaffolding

SCA's Marine Team undertake all manner of access works to a variety of different vessels, and are well versed in the vast array of requirements.



Repairs Completed on the Move

SCA have provided Rope Access technicians to perform specialist repairs to Cruise Liners whilst they are at sea, and without detriment to the clientele.



Superyacht Maintenance

SCA has forged great partnerships with Pendennis Shipyard and Sunseeker International and continues to provide the access solutions required to construct new vessels, and refurbish existing models.



Did You Know.....?

The SCA Group offers a highly skilled, proficient Rope Access service as a safe and cost effective method of achieving work position at height, or in areas of complicated access.

The Rope Access method has its roots in techniques developed in caving, and has now become a much less cumbersome alternative to employing heavy machinery or equipment, which can be both costly and difficult to organise.

Rope Access is now widely recognised as a simple, safe and adaptable means of access, with applications ranging from small scale window or façade cleaning, to more industrial sized inspections on oil and gas platforms.

The applications for the Rope Access service provision are far reaching, and include general maintenance, repair, geotechnical and inspection work to name a few, all of which are covered by the SCA Group, and carried out without compromise to IRATA guidelines and legislation.

All of SCA's Rope Access technicians and supervisors are highly trained, qualified and experienced in the field, ensuring the safest, highest quality workmanship at all times.

SCA have worked in all manner of environments with the Rope Access service, from offshore sub-stations and wind farms to high level bridges and viaducts, but we have

also recognised a widespread requirement for the ongoing maintenance and general upkeep of the railway stations and tracks across the length and breadth of the country.

The SCA Group's Rope Access team are providing a unique solution to maintaining and servicing Britain's railway lines, stations and verges. Across the UK, SCA's skilled employees are carrying out various de-vegetation works along the rail network in order to keep our stations and tracks free from overgrowing trees, weeds and bushes, and to satisfy the requirements of Network Rail to keep the stations and lines in neat and tidy order.

Working for a number of clients including Dyer & Butler and J Murphy & Sons, SCA's service provision in this particular field includes removal of vegetation, tree cutting and felling, wood chipping, landscaping, weeding, and many other methods of maintaining the greenery in and around the railway stations stretching across the country.

Given SCA's Rope Access capabilities provided by our experienced and highly



qualified management and supervision, all of the above works take place in hard to reach areas such as the sides of bridges or steep viaducts and verges, and can take place during possessions, night shifts or normal working patterns.

All Rope Access services are carried out to the highest standards of safety and quality, and, of course, in line with Network Rail working conditions as dictated by SCA's Link-Up status.

For more information on this service, or indeed any other Rope Access provisions, contact **Scott Barton** at SCA Head Office on **01202 820820** or email **scott@sca-group.com**.

Closing comments from the Managing Director



"It is with a great sense of pride that we distribute the second SCA Group Newsletter for your information, and, hopefully, your interest. In every project that SCA is involved in, we display a dedication to health and safety, quality, and efficiency that we feel is unrivalled in our chosen industry. This is a sentiment which is echoed by our clients, and testament to our work ethic, and the value that we place in all of our employees, from senior level management through to the scaffolders on the ground, all of which are as important as each other"

SCA Group Newsletter

7 Crane Way, Woolsbridge Ind Park

Three Legged Cross

Wimborne

Dorset BH21 6FA