



# SCA Group Newsletter

## June 2015

### IN THIS ISSUE

## A New Beginning for SCA

Welcome to the third issue of our Company Newsletter, and as always, we thank you for your continued interest in our business and our activities.

SCA enjoyed a fantastic 2014, and 2015 is shaping up to be even better, but it will have to be achieved with a new MD at the helm. See inside for more info!

In recent months the SCA Group celebrated securing the contract for the scaffolding and access work in Govan shipyard for the production of three Offshore Patrol Vessels (OPVs) being built in this illustrious shipyard. This is SCA's first forage in to the Scottish shipbuilding yards and we hope this can be the start of great things for us in the North.

If recent government announcements are to be believed, this certainly puts us in a superb position. BAE Systems have just completed a deal with the Ministry of Defence worth £859million to the UK ship building industry. The investment represents the next phase of Royal Navy development in the production

of the future Type 26 complex warship – the next generation frigates.

Not only is this a huge coup for the SCA Group, but also for the financial recovery of the UK. The investment will safeguard around 1700 jobs (600 in Scotland) in sites across the country, something that no-one can fail to appreciate the importance of.

Whilst our Marine Scaffolding operations continue to fly the flag for the SCA Group, our Commercial arm has also been strengthened with the acquisition of prominent Isle of Wight scaffolding company, Access Scaffold IW. This will enhance our position on the Island where we already enjoy a significant presence in the market.

But don't forget, nowadays the SCA Group is not just about scaffolding. We are performing a wide range of Rope Access tasks in projects across the country, and currently engaged in Industrial Coatings activities also, so for more information about everything we do, read on or visit our website at [www.sca-group.com](http://www.sca-group.com)



### SCA Site Services across the UK

SCA's multi-disciplined technicians have been working in various sites across the UK providing an array of provisions for fixed site management



### Industrial Coatings

Project successfully completed at Hayle Viaduct with SCA playing a key role in quick turnaround.



## Isle of Wight Acquisition Complete

SCA have recently completed the acquisition of Access Scaffolding IW, and have formed a single division for our Isle of Wight operations that will become the largest provider of contract scaffolding on the island. Access Scaffolding IOW will exist as a wholly owned subsidiary of the SCA Group, with the existing owner, Ashley Palmer, excited to commit his future to the new venture.

Ashley Palmer's scaffolding business, Access Scaffolding, has been a presence on the Isle of Wight for many years, and the business has undergone substantial growth under Ashley's stewardship, forging some great partnerships and working relationships along the way.

SCA recognises the potential in Ashley's business, and the hard work that has gone in to creating such a fantastic company, and coupled with our resources, reputation and enhanced service provisions, we believe that we can further improve the offering to the Isle of Wight, and build upon some well laid foundations.

SCA also has vast experience of working on the Isle of Wight with local people and local businesses, and we can further establish the reputation of 'SCA Access IOW' through our accreditations and memberships, not to mention our network of contacts and customers. As full members of the National Access & Scaffolding Confederation, (NASC), we can demonstrate our dedication to high standards of workmanship, attention to detail, and ability to work to the highest levels of health and safety, something that can only bring additional benefits to the service we can provide.

For more information, or if you have an enquiry, then please contact us using the following details:



### CONTACT US

**Mr. Ashley Palmer**

Contracts Manager

07917 132390

**Mr. Barry Westbrook**

Divisional Director

07736 691184

01202 820820



## Access Scaffold IW First Full NASC Member on the IOW

Following on from SCA Group's successful acquisition of Access Scaffold IW, this newly formed division of our core business can now boast to be the only native scaffolding contractor on the Isle of Wight that is a full member of the NASC – The National Access and Scaffolding Confederation.

The NASC is recognised as the national trade body for access and scaffolding in the UK, and is responsible for producing guidance in the industry for contractors, clients and customers. As membership is only achieved through a strict audit, the clients of Access Scaffold IW can be assured that all our scaffolding practices and activities are

regulated to make certain that the highest standards are maintained.

Membership to the NASC has multiple benefits for clients and contractors alike, such as access and guidance to the very latest legislation, not to mention that there has been an evident shift for main contractors of late to specify 'NASC only' companies in their tenders

Health and Safety is high on the NASC's agenda and its members undergo regular monitoring to ensure that accident statistics remain in line with NASC expectations. This is partly achieved through the annual audit, but also through regular updates and by providing contractors with a wealth of professional advice.

The SCA Group has a long standing association with the NASC, and we take great pride in this landmark acknowledgement of our company's activities.

More information about the NASC can be found here [www.nasc.org.uk](http://www.nasc.org.uk)





## NEWS STORIES



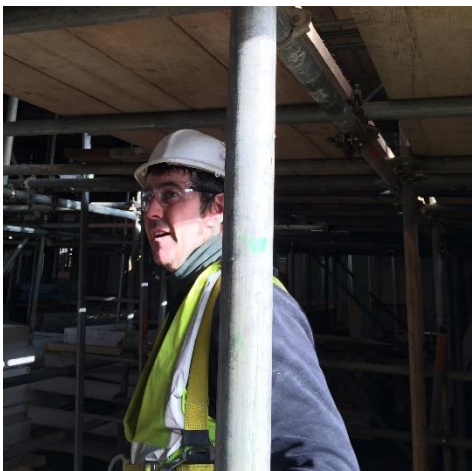
## SCA's Highly Skilled Site Services Team In Action

SCA's Multi-Discipline team pictured here providing specialist Rope Access techniques to complete surface preparation and protective coating work in industrial locations across the UK



## Railway Line Devegetation Works

SCA can provide IRATA trained Rope Access technicians for many applications – we have been particularly successful working with clients to maintain the track-sides of railway lines across the country.



## SCA Scaffolder wins Safety Award

Pat Murphy's performances on site have singled him out for high praise from Geoffrey Osborne Limited, and a special award from the client as a result.

Keep up the good work Pat!



*A change in leadership has occurred at the SCA Group, but it's a familiar face now in charge – read on for more details....*



# Latest SCA Group News

There was some sad, but exciting news (quite conflicting emotions I am sure you will agree) at SCA recently with the announcement that Steve King, the man who brought SCA into existence, and whose passion, and determination for the business turned it in to the success story it is today, is set to stand down as Managing Director.

Knowing Steve's ambition and relentless approach to business, this was something of a shock, but Steve will remain as much a part of the business going forward as he has been in the past, only now, under the guise of Chairman.

Steve's presence will be sorely missed by all of SCA – many of whom are hugely indebted to him for the opportunity to work for such a prestigious company, and everyone wishes him well for the future.

In all of Steve's time at SCA, one man has stood by his side and helped nurture his vision for the company, gradually turning it in to reality. Existing Director, Lee Bennett, has gladly accepted the challenge and the responsibility of the position of Managing Director, and he will lead SCA in to the next phase of development, guided and assisted by Steve in his new role.

Lee could not have wished for a better mentor than Steve over the years, and he now looks to harness this experience and propel the SCA Group successfully in to the future, bringing his own style of management in to the equation at the same time. Everyone at SCA wishes Lee the very best of luck as he begins a new chapter in his career, and will give him every bit of support they can to achieve his goals and ambitions for the business.

For the full story, and a bit more on the history behind the management of SCA, visit our website:

[www.sca-group.com](http://www.sca-group.com)

## Safety First for SCA Employee

SCA has always displayed a strict no-nonsense approach to Health & Safety performance, and can boast safety statistics well below the industry average. Employees are trained and encouraged to pick up on potential hazards and act accordingly, and the safety of all our employees will always be paramount.

As a result, it was especially pleasing to receive commendation from our client recently regarding one of our employees, and their exemplary attitude to site safety.

Pat Murphy has been awarded a Health & Safety prize by Geoffrey Osborne Limited for his performance on a site where SCA have been carrying out the scaffolding to refurbish a local school. It was recognised on a number of occasions that Pat has never relinquished his work ethic, no matter what the circumstances, and he has paid extremely close attention to Health & Safety matters on the site at all times. It was noted that *"this is unusual for a scaffolder to show so much consideration regarding safety which is a huge asset for any company to have"*.

SCA could not be prouder of Pat and his attitude to work, and whilst all employees act in the safest manner possible at all times, to be singled out for special recognition is no mean feat, so we echo the comments from the client and give Pat huge a 'well done' and we hope he keeps up the good work!

## CASE STUDY



# Hayle Viaduct

## SCA Industrial Coatings



*Hayle Viaduct pictured here having 750 timbers replaced by Stobart Rail with SCA providing the specialist surface coating prior to the new timbers being put in to place*

SCA have been contracted recently by Stobart Rail to provide Network Rail specified coatings to multiple spans at Hayle Viaduct, in order to strengthen the ageing infrastructure.

The Hayle Viaduct is situated in the small, picturesque town of Hayle, north-east of Penzance, in Western Cornwall.

The planned program at the 129 year old viaduct, was scheduled for a period of only 16 days and involved day and night shifts to meet the ambitious deadline. The work was required to replace the life expired deck timbers (750 in total), in order to prevent future delays should the expired system show signs of failing.

Once the timbers had been removed from their fixed position, SCA's involvement was to carry out repairs to the steelwork, removing paint and corrosion and then re-coating the surfaces in line with stringent Network Rail requirements.

The scope of works to regenerate the infrastructure of this stretch of railway line extended across 37 spans of the viaduct, and SCA mobilised a fourteen-man team to make sure that work was complete on time and within budget.

The entire project finished within the agreed timescale and the main contractor was praised for everyone's efforts in minimising the disruption to the railway.

## It's Not Just About Ships....

### SCA's Service Provisions and Capabilities

As much as there can be no doubt that the SCA Group is hugely indebted to the Marine sector for providing a solid platform for the future development of the business, there are more strings to the company's bow that many people may not be aware of. Scaffolding for ship repair has long been our bread and butter, but the SCA Group is much, much more than that.

Our access scaffold and specialist containment offering is no longer limited to the Marine sector, but services the commercial and industrial sectors across the country. SCA's scaffolders can be found working on new housing developments,

railway lines, bridges and more, always to the highest of standards and in close collusion with the client to beat budgets and time constraints wherever possible.

Outside of scaffolding, SCA have created a hugely professional Site Services provision, catering for a wide range of requirements, strategically designed to offer site management for the client. Rope Access technicians and Industrial Painters are able to offer access solutions for repair and refurbishment or protective coatings, and a wide range of associated services for a complete solution.

Our operatives not only cover the repair and protection of various assets, structures and buildings, but also provide general maintenance and upkeep of the surroundings. This generally takes the form of devegetation activities, repointing of brickwork, blockwork or stonework, tree removal, and everything else in between where due care and attention is required to ensure the continuous and efficient running of a site or area.

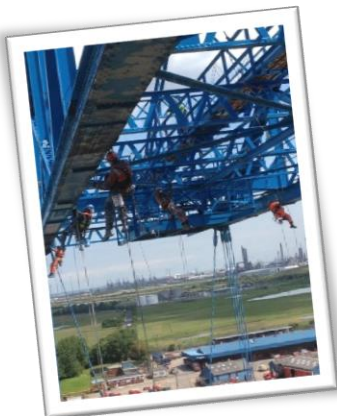


These activities can have substantial cost savings by preventing downtime and inefficient operations.

#### FOR MORE INFORMATION

For more information about our Site Services offerings, contact Scott Barton on 01202 820820 or by email:

**CONTACT**  
scott@sca-group.com





# What else have we been up to?

As you have now hopefully seen, SCA's skills and capabilities stretch far and wide, and our management relishes the opportunity to put all of our capabilities to the test. Our innovative and lateral approach to any project or problem means we generally develop a solution, and the belief we instill in our clients means they also trust us to carry them out!

Below is a small snapshot of some of our activities currently being utilized across the country in a variety of different circumstances.

## ➔ Shipyards

In shipyards along the length and breadth of the country, SCA remain a prominent figure in ship repair activities for an ever-growing array of clients.

Such is the regard held for the business in this niche market sector that SCA now operates in Govan, Scotland, working for BAE on the new OPV project. This has been a fantastic achievement for our business, and hopefully a sign that we can continue to grow in to new shipyards in the future.

## ➔ Industrial Coatings

SCA's Paint technicians have been widely utilized of late on a number of interesting and challenging projects, none more so than the Hayle Viaduct contract as seen earlier. As well as the viaduct, our Industrial Coating Applicators have been preparing and painting two bridges – Brockenhurst in the heart of the New Forest, and Midland Bridge in the picturesque city of Bath.

Both contracts have involved significant mobilisation and close planning with the client to ensure the contracts are run smoothly and efficiently, with minimal disruption to the surrounding areas.

## ➔ Contract Scaffolding

Both bridge projects detailed above not only employed SCA's surface preparation and painting services, but also our contract scaffolding team as well, with SCA responsible for the specialist access system and the temporary shrink wrap containment.

The provision of the scaffolding and containment, and the management of multiple trades by a single sub-contractor,

has meant that the surface preparation, blasting and protective coatings have been carried out safely, on time, and to the specification requested.

## ➔ Site Services North & South

SCA can now provide coverage for the North and South of the country in multiple site service provisions, applying their highly skilled technicians and hugely experienced management team to a variety of contracts and industries.

Contracts have been completed to repair communications masts, industrial tanks, cranes and bridges and much, much more.

For additional information, there are a number of case studies available on our web site offering further details about the business and our multiple capabilities.

## ➔ Rope Access

In recent months, SCA have engaged in various projects maintaining the verges and localised areas around railway lines and stations. Protection is provided for the track itself, or removing trees and vegetation making sure there is no encroachment on to the working lines, or any imminent danger of the existing vegetation upsetting the rock formations or shape of the steep cliff faces.

SCA's technicians work in accordance with specifically prepared ecological studies carried out in the area, and make sure that all activities have the minimum impact on the environment, whilst abiding by strict Network Rail guidelines at all times.

If you have any questions about any of the contracts we have carried out, or how any of our multiple services can be of use in your next project, be sure to contact us first with all of your requirements:

**T: 01202 820820**

**E: [sales@sca-group.com](mailto:sales@sca-group.com)**

**W: [www.sca-group.com](http://www.sca-group.com)**

## SCA GROUP ACTIVITIES



### Bridge Refurbishment

SCA's Multi-Discipline team have provided the specialist access and containment for the application of the protective coating for Midland Bridge, Bath.



### Scaffolding for Ship Repair

Ship repair activities in Hebburn and Tees shipyards has been especially vibrant recently, with SCA on hand to provide the access scaffolding requirements.



### Commercial Scaffolding

SCA's scaffold team are currently working on a new school project for Osbornes



# SCA Invited North by BAE Systems

SCA has a long-standing relationship with BAE Systems in the Portsmouth Naval Base as the sole supplier of scaffolding, access and containment services. SCA has been contracted in this role for many years now and we are quite-rightly very proud of the 'partnership' we have formed and developed over time.

Such is the strength of BAE System's belief in our abilities to not only carry out scaffolding services in such a time-critical environment, that we have now been invited North of the Border to take up a similar role in Govan and Scotstoun shipyards. SCA has been asked to provide a similar scope of services for the production of the UK Royal Navy's new Offshore Patrol Vessels (OPVs).

This is not just a fantastic opportunity for SCA, but also a huge boost to the local Glasgow region, with BAE Systems making significant investment in the shipyards to reinforce their position as a World class Naval engineering business. The decision to build the OPV's in the area also makes sure that a 200 year long tradition of building the nation's foremost ships continues in the Clyde and safeguards hundreds of jobs.

Production of the first of three new vessels commenced in the latter part of last year with SCA now on hand to provide all access requirements for the new ships. The OPV design is 90m in length, and based on an existing BAE design already utilised by the

Brazilian and Thai Navies. The vessels will ultimately include a newly designed operating system, more accommodation for troops, larger stores, and a modified flight deck capable of receiving the new Merlin helicopters.

Once construction is complete (the first of the three OPV's – HMS Forth - is expected in 2017), the OPV's will have global deployment capabilities with a maximum speed of 24 knots, and a patrol range of 5,000 nautical miles.

The core BAE Systems design that has already led to the successful deployment of the River Class OPV's to foreign Naval Commands has been retained, but enhanced enough to make the ship larger, with increased capabilities and a more efficient way of operating. All of this ensures the vessels will be adaptable, and able to meet the demanding requirements of the Royal Navy.

The move to construct the brand new River Class vessels in the Clyde region secures valuable work and employment at the Govan shipyard, which is great news following recent job cuts in Scotland. This also displays the Government's commitment and continued support for a UK Shipbuilding



strategy, and the success of the partnership that has sustained the industry in Scotland.

SCA's participation in this ground-breaking project is a perfect demonstration of the specific capabilities and knowledge of the Marine Scaffolding division built up within the business over time. It is a proud recognition of our company and the ability we have to deliver a high quality service to the strictest of safety standards.

For any further information about our Marine activities and locations across the UK, please contact our Director, **Lee Bennett** on **07889 194161** or at **Head Office** on **01202 820820**.



## Closing comments from the Managing Director



*"As much as this is a poignant moment for myself signing off on my last Newsletter as Managing Director, I can safely say that our business has never been in better shape. I cannot thank all members of staff enough for their loyalty, support and hard work over the years that means I hand the company over to my great friend and colleague, Lee Bennett, with nothing but confidence for the future. The very face of the company is virtually unrecognisable from the small commercial firm we created all of those years ago, and I will always retain my passion for the best interests of the company no matter where I am. Here's to the future of our fantastic business!"*

## SCA Group Newsletter

7 Crane Way, Woolsbridge Ind Park

Three Legged Cross

Wimborne

Dorset BH21 6FA